

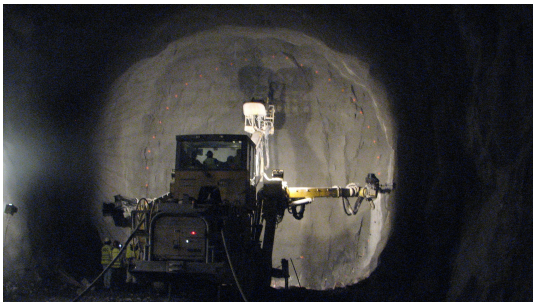
Due to the on-going financial and economic difficulties in Portugal, the underground works during 2013 were only those related with hydroelectrical power systems that were initiated in previous years.

**The Portuguese electricity company** (EDP) has been upgrading the installed power in several dams and building new ones.

Regarding the power upgrade projects one may quote Salamonde II (power to be installed: 207 MW), Alqueva II (256 MW) and Venda Nova III (746 MW).

On what concerns the construction of new dams, the construction activity of Baixo Sabor dam (170 MW), Foz Tua (250 MW) and Ribeiradio Ermida (80 MW) dam continued during 2013.

In both types of projects, underground works included the construction of the electrical central and the appurtenant hydraulic tunnels.



*Drill and blast at the turbine tail race tunnel at Salamonde II site*