

CREG TBM Germany GmbH

Mr Thomas WU

Managing Director

Willstaetterstr. 15,
40549 Duesseldorf
Germany

Tel: +49 49 211 522 889 00

Fax: +49 211 522 889 11

E-Mail: info@creg-germany.com

Web: www.creg-germany.com, www.crectbm.com

CREG - China Railway Engineering Equipment Group Co., LTD.

A TBM supplier for the challenging tunneling work for underground projects all around the world. CREG provide TBMs, tunneling technology and underground solutions for the most requirements of the different projects, such as Metro, Railway and Highway Tunnels as well as Water Transfer Tunnels.

Until end of 2017 CREG has supplied more than 570 sets of TBMs, EPB TBMs and Slurry TBMs, Single Shield, Telescopic Shield and Gripper TBMs, with boring dia. from 3 m to more than 15 m, which have been used around the world. CREG's competitiveness in innovative design, top quality, on time delivery and customer - friendly job site service are outstanding and well recommended.

Besides the solutions for TBM tunneling CREG has wide range of additional equipment for tunneling works in its product portfolio, like disc cutters, rolling stock, battery or diesel locomotives, belt conveyors, tunneling formworks as well as tunneling jumbos.

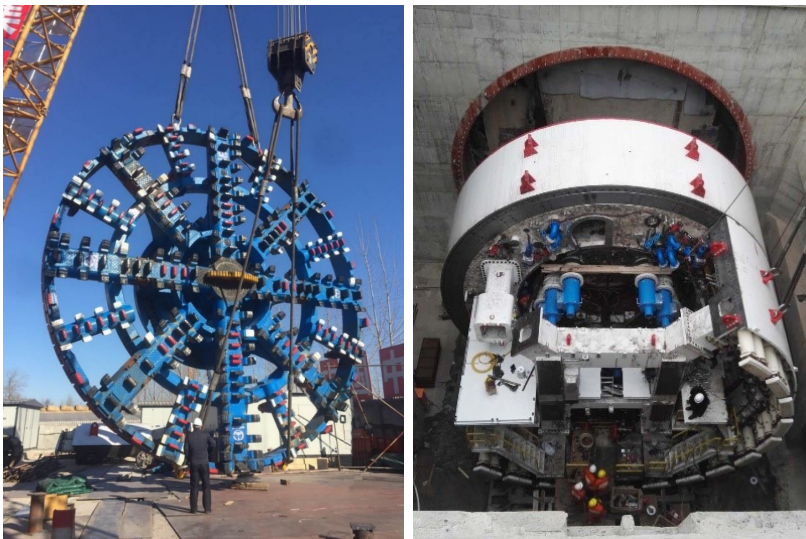
CREG TBM Germany - Subsidiary of CREG China - is based in Erkelenz and was founded in 2014 as part of the takeover of the tunnel boring business from Aker Wirth.

Examples of recently manufactured TBM's:

CREG the Ø9.03 m hard rock gripper TBM CREG has designed and manufactured the largest gripper TBM ever built in China. Due to the high speed railway tunnel project has to cross very complex geological conditions many new technologies has been integrated.



The Ø12.14 m EPB machine has been launched in Taixi railway tunnel project. This tunnel was mainly built in water rich aquifer layers sand, gravel, cobbles and clay.



Ø10.9 m Slurry machine was used for the “Beijing to Shenyang high speed railway tunnel”. A shallow overburden section has already been passed. This tunnel crosses below many high-rise buildings, airport highway and Metro line.